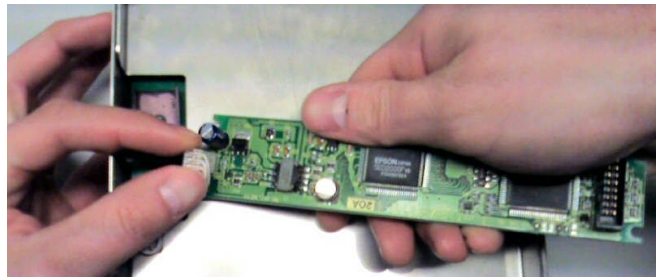
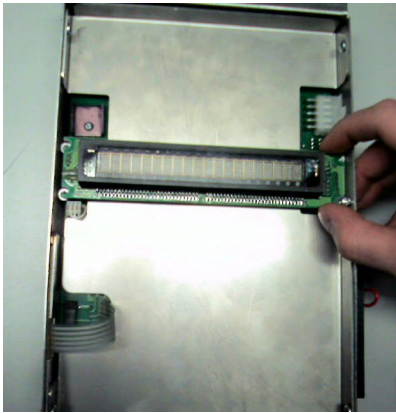


ACW4 - Display Retrofit

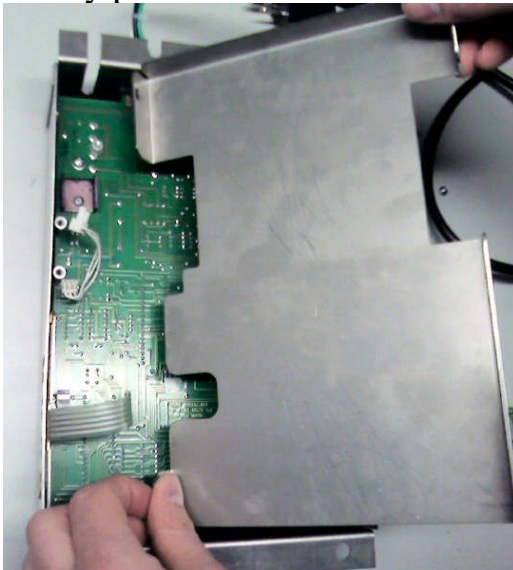
Step 1: Preparation

- Remove Power from ACW Controller and unplug all connectors. Failure to remove power could result in electrical shock.
- Remove 4 screws holding Vacuum Florescent Display in place Note: Keep all original hardware
- Unplug 3 Pin connector from Display



Step 2: Circuit Board Removal

- Remove 4 screws holding stainless steel pan and lift out pan
- Gently pull out contact switches

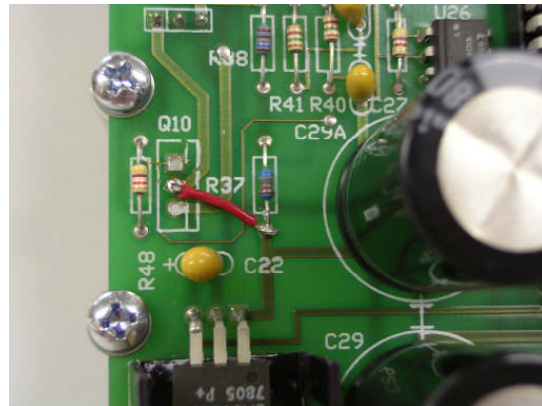
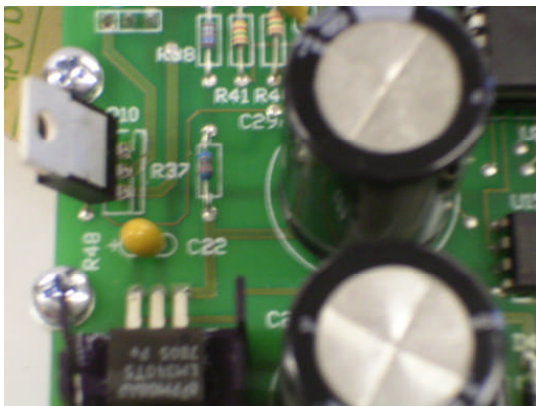


- Remove 4 screws holding circuit board and pull the board out of the case



Step 3: Circuit Board Modification

- Turn circuit board over to component side. Cut component Q10 off of circuit board and discard
- Solder wire from the center pin of Q10 to the bottom of R37 as shown below.

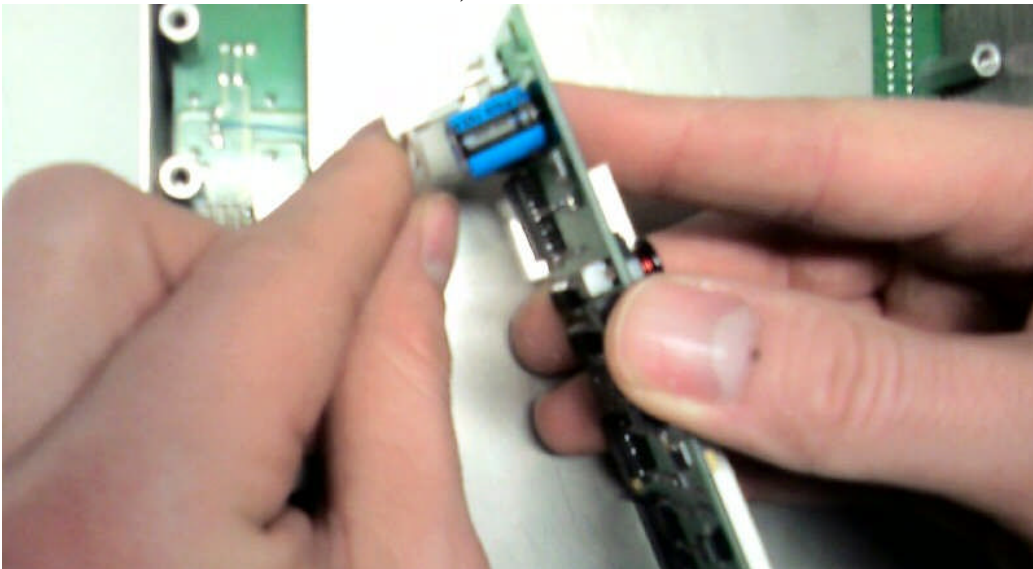


Step 4: Reassembly

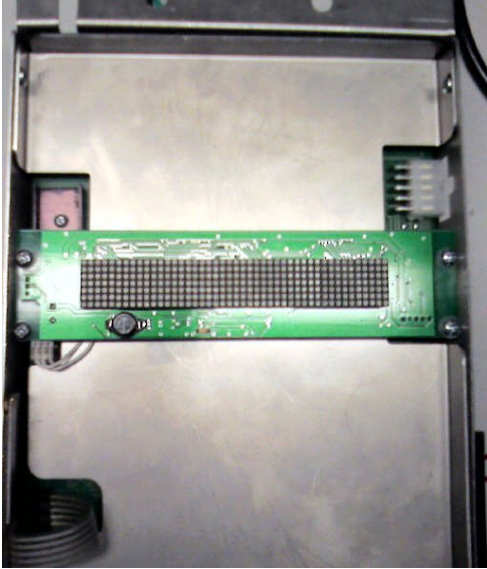
- Place board back into case using the original hardware
- Reinstall contact switches and stainless steel pan



- Plug 3 Pin connector into new Dixmor display (Connector is keyed and should slide in with little force)



- Install new display (using the original hardware)



Step 5: Test

- Reconnect all harnesses and apply power



If you have any questions call Dixmor at: 303-794-0597 or 303-794-1387